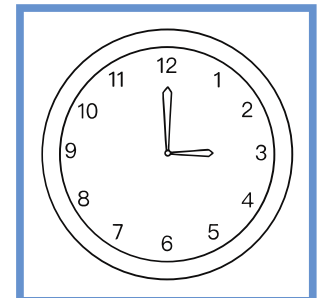
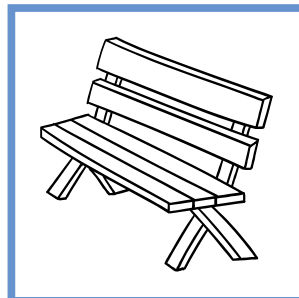
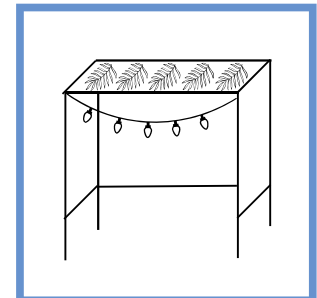
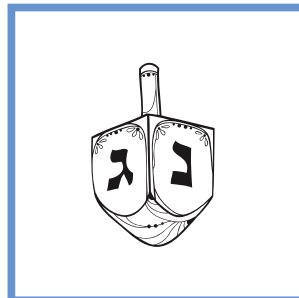
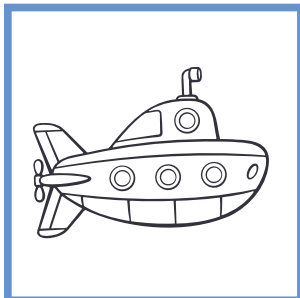
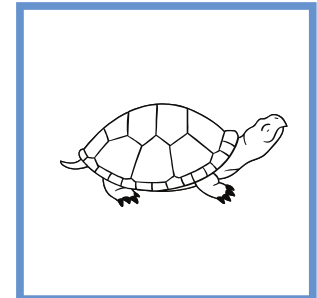
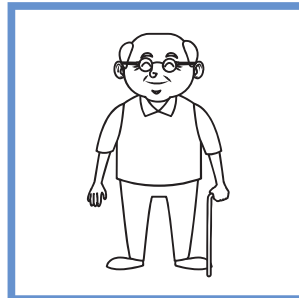
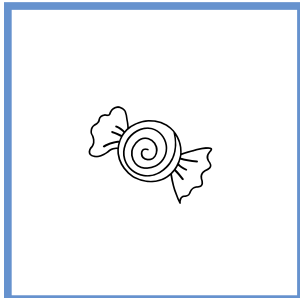
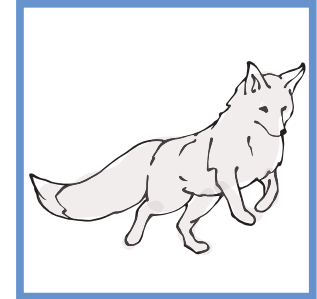
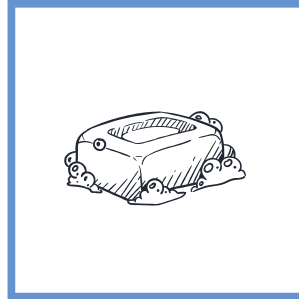
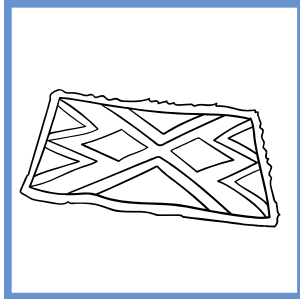


הַעצוֹר ס

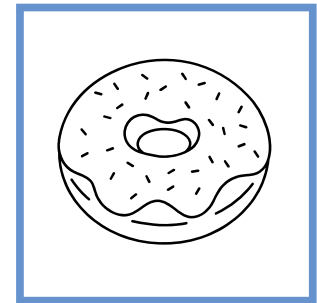
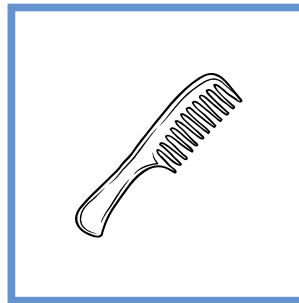
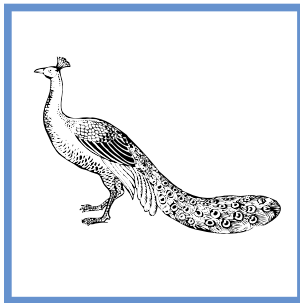
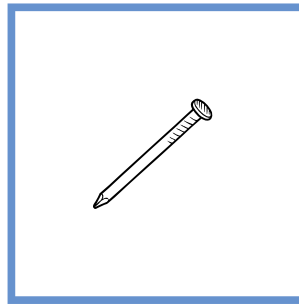
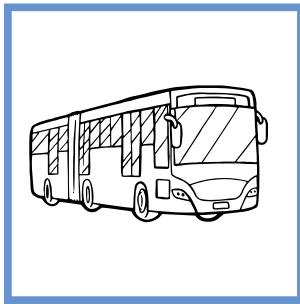
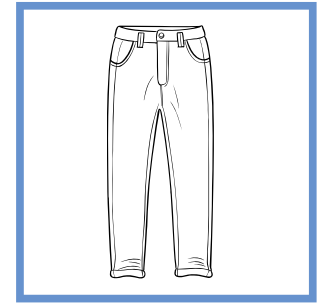
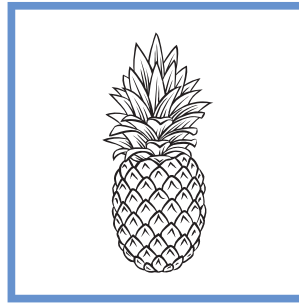
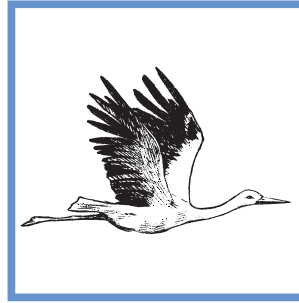
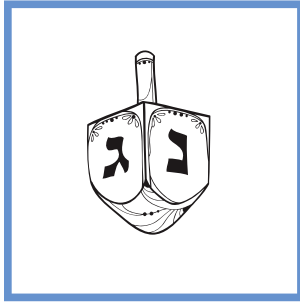
מתרגלים

1 צבעו את הציור אם המלה המיציגת מתחילה בעצור ס.



המלים הן: שועל, סבון, שטיח, צב, ספא, ספרייה, ספה, סביבון,
צוללת, שעון, ספסל, סיר.

צבעו את הציור אם המלה המיזגת מסתיימת בעצור ס.



המלים הן: פָּנָס, חֶסֶדָה, סְבִיבוֹן, מְכַנְסִים, אָנָּס, סַנְדָּל, סַנְאִי, מְסִמָּר, אוֹטוֹפוֹס, סַפְגָּנִיָּה, מְסִרְקָה, טוֹס.